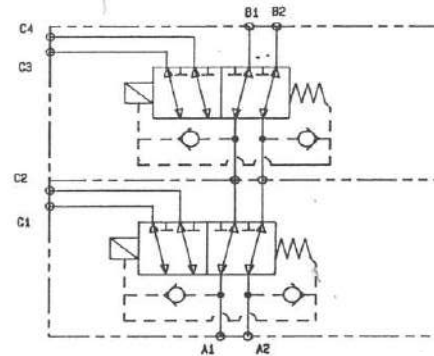
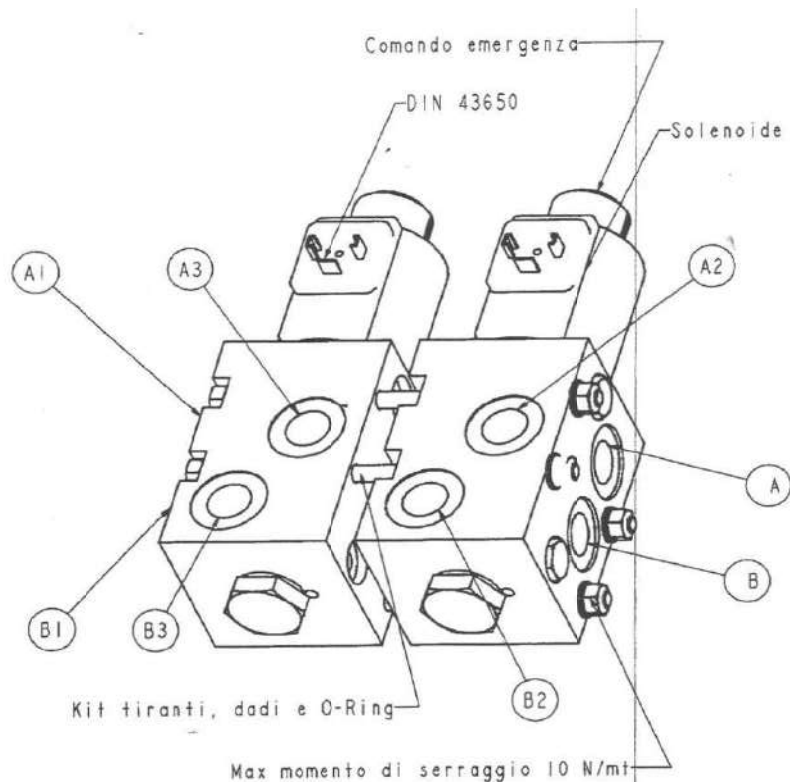
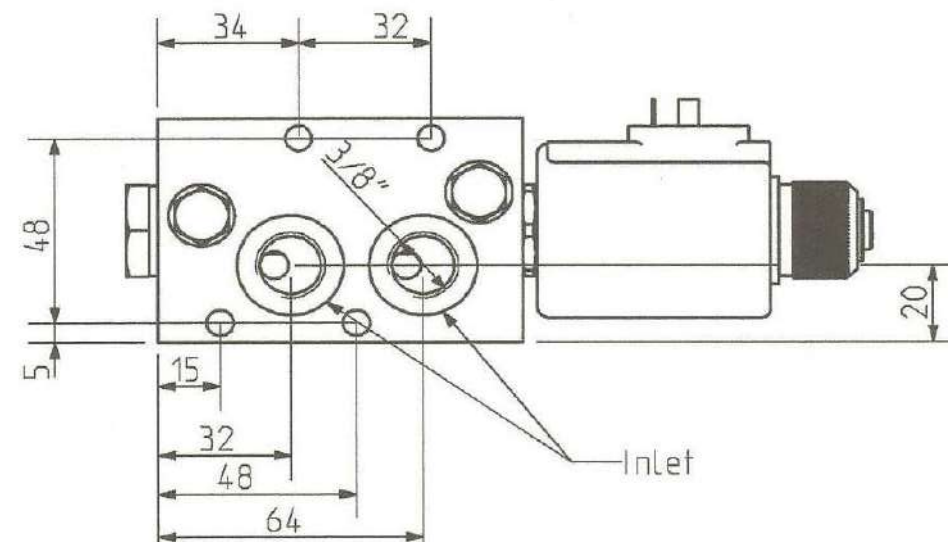


EDF8/6/2-3/8" BSP-MODULAR



PORTS	STANDARD SIZE	Caratt.	
A	3/8" BSP	Press. eserc.	210 bar
B	3/8" BSP	Exerc. press	
A1	3/8" BSP	Press. max	260 bar
A2	3/8" BSP	Max. press	
B1	3/8" BSP	Port. max	40 lt/min
B2	3/8" BSP	Max flow	
		Port. nom	18 lt/min
		Nom. flow	

N° Sez	Denominazione	Codice	Dimens O-Ring
2	Kit assemblaggio EDF8/8	161550	∅ int 23.52x1.78
3	Kit assemblaggio EDF8/10	161551	∅ int 23.52x1.78
4	Kit assemblaggio EDF8/12	161552	∅ int 23.52x1.78
5	Kit assemblaggio EDF8/14	161553	∅ int 23.52x1.78
6	Kit assemblaggio EDF8/16	161554	∅ int 23.52x1.78





O.R.T.A.

OLEODINAMICA
S.R.L.

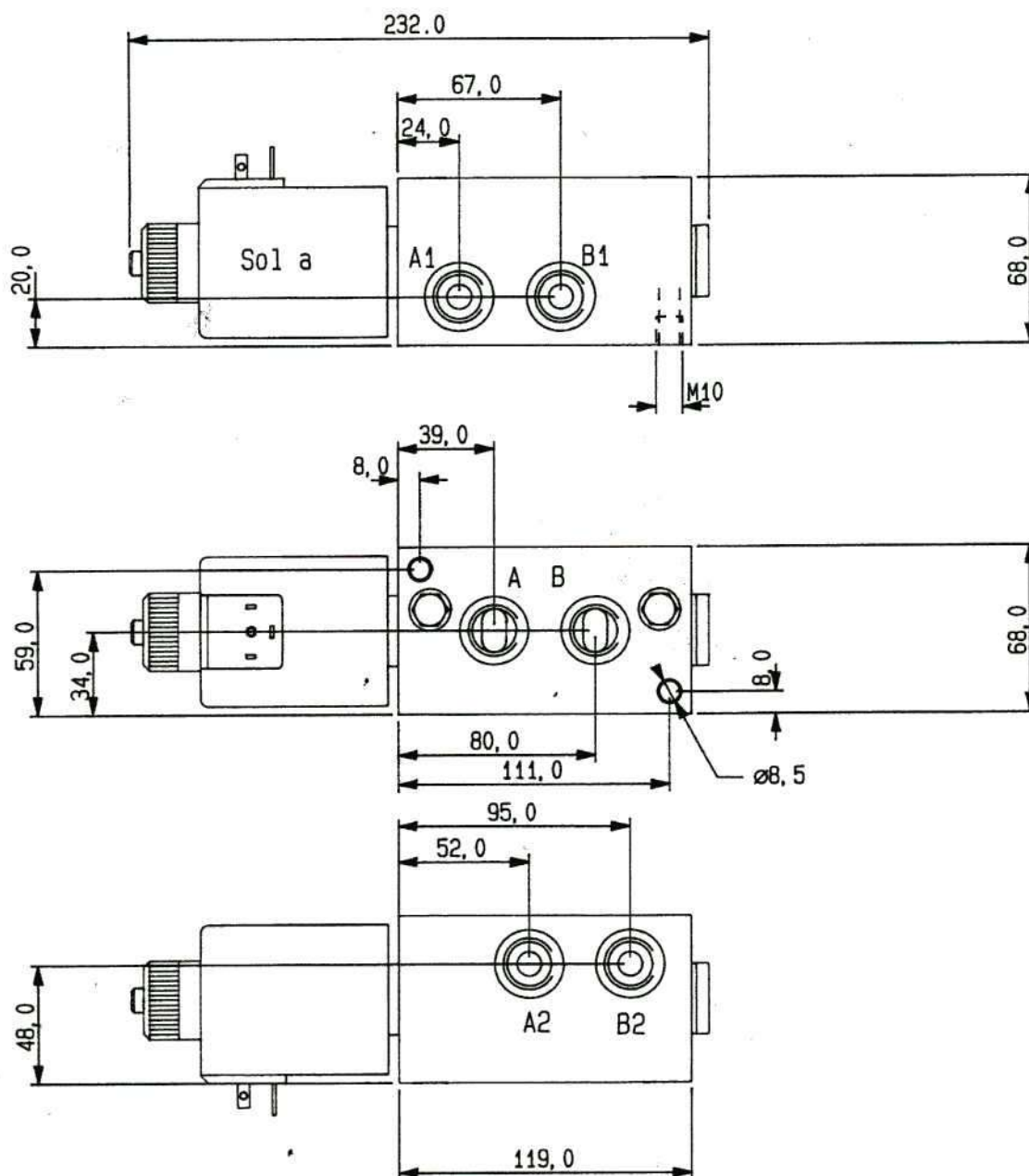
Brescia - Italia
Tel. 030/363627
Telefax 030/362761

DEVIATORE A 6 VIE COMANDO ELETTRICO
EDF/10/6/2-HF-1/2 BSP

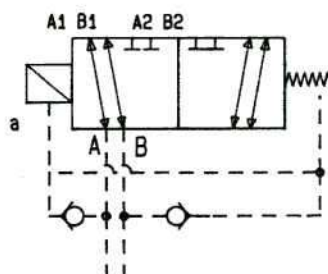
6 WAYS SOLENOID CONTROL DIVERTER FLOW

16-012

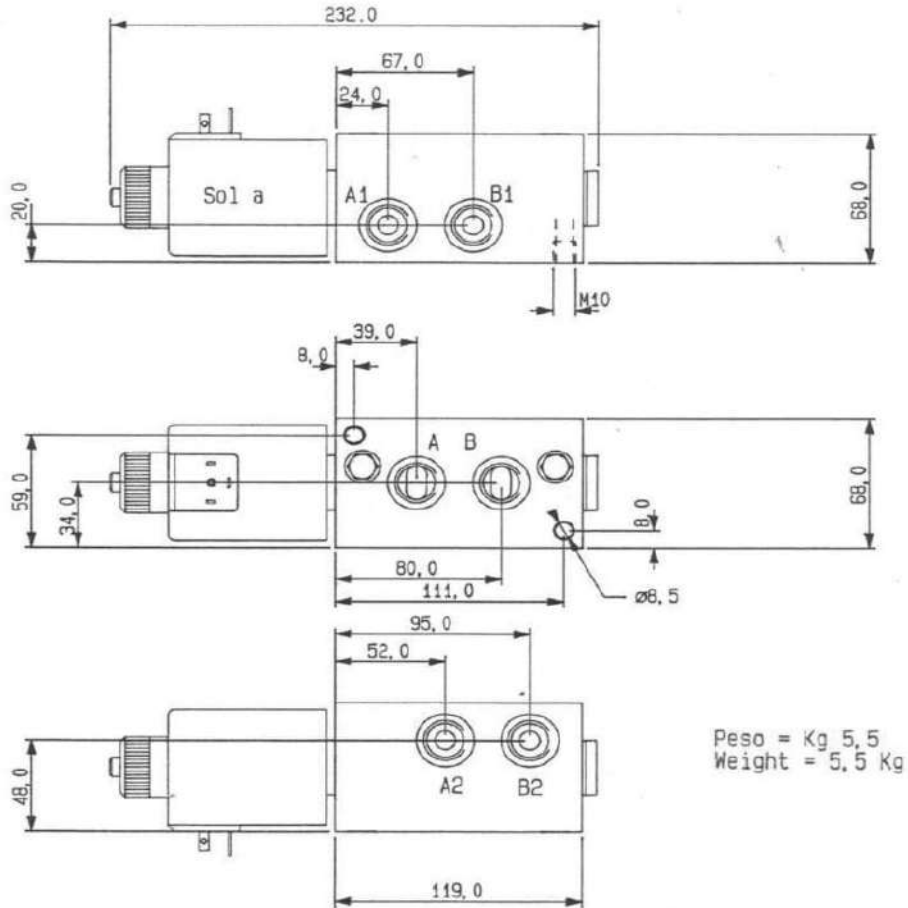
02/98



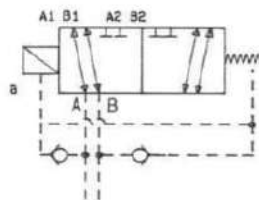
Tutti gli attacchi sono
da 1/2 BSP
All ports are 1/2 BSP



EDF10/6/2-1/2" BSP-HF-SINGOL

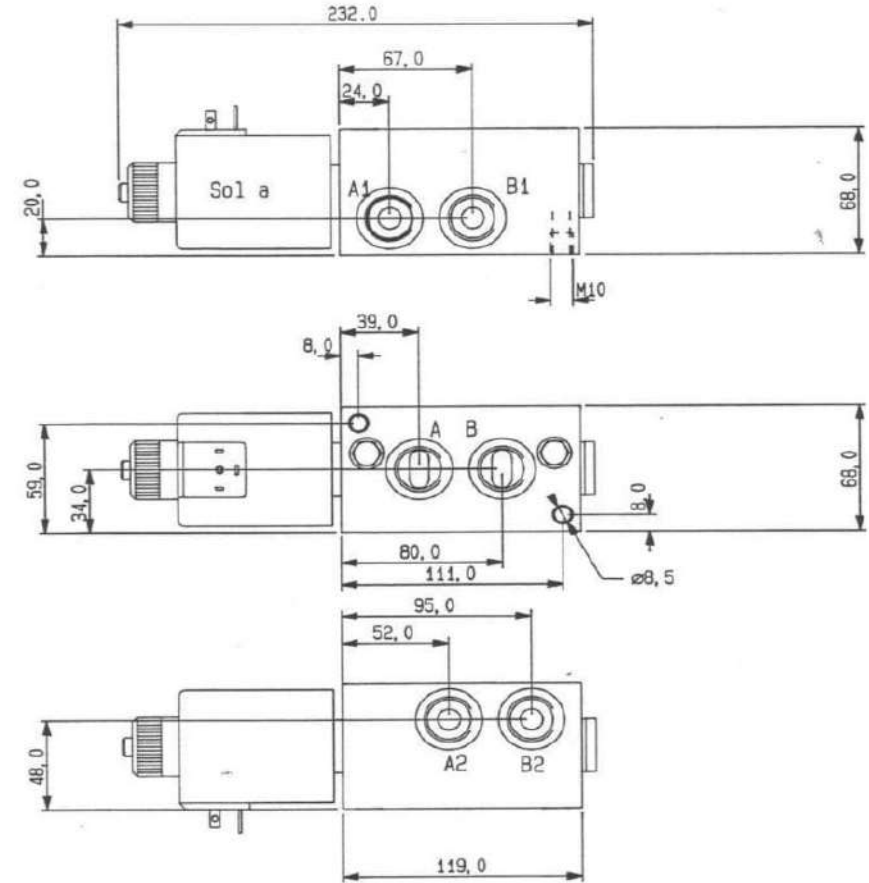


Tutti gli attacchi sono da 1/2 BSP
All ports are 1/2 BSP

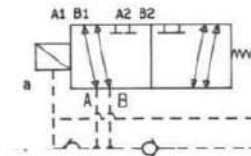


Portata massima:
Maximum flow:
Pressione di esercizio:
Exercise pressure:

EDF12/6/2-3/4" BSP-HF-SINGOL



Tutti gli attacchi sono da 3/4 BSP
All ports are 3/4 BSP



75 lt/min (1,25 Dm/sec)
75 lt/min (1,25 Dm/sec)
210 bar (21 Mpa)
210 bar (21 Mpa)